



CRUNCH TIME



IN-HOUSE DESIGNED AND BUILT CRUSHER GIVES GREATER EFFICIENCY FOR FMG

A unique cone screen combination, a design that we have found gives a greater level of throughput has been built by our plant workshop and installed at FMG's Cloud Break Mine (see photo above).

In addition to giving a greater level of efficiency, an aspect that particularly appeals to us is that this unique design takes less time to assemble on site.

The unit has been installed at the Cloud Break Mine to process - 12mm iron ore.

The contract follows on from previous work that Rapid undertook for FMG at the Christmas Creek site where Rapid produced over 4.5 million tonnes of iron ore for shipment over a period of 6 months.

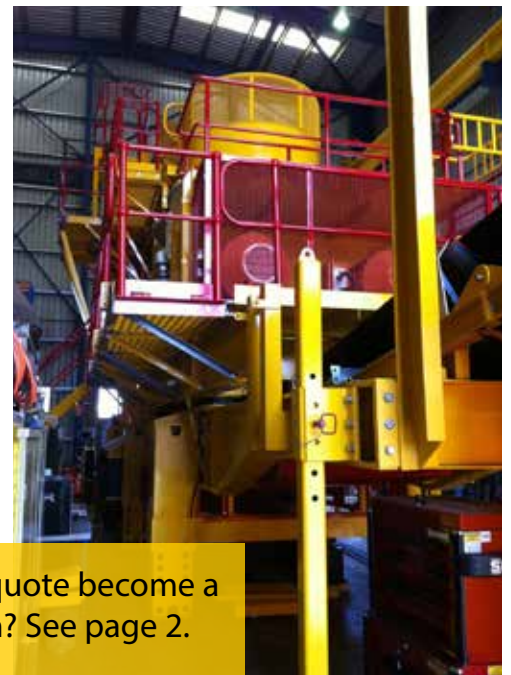
Having our own engineering division has been a huge asset for Rapid Crushing as it has enabled us to build equipment best suited for client requirements.

A feature of the design capability is that we tailor the design of the plant to the configuration of the site.

Essentially Rapid Crushing is one of the rare companies with the know-how to build and modify plant ourselves - making it superior to the plant you can buy 'off the shelf'.

While that doesn't sound significant to someone simply examining quotes, it does become significant with respect to the final outcome of a project.

In fact we can prove that a more expensive quote is often a cheaper quote in the long run.



How does a more expensive quote become a cheaper quote in the long run? See page 2.

WWW.RAPIDCRUSHING.COM.AU

WESTERN AUSTRALIA OFFICE

577 Bickley Road, Maddington WA 6109
Tel (08) 9452 5888

QUEENSLAND OFFICE

47 Dozer Drive, Pagent Industrial Estate, Mackay Qld 4740
Tel (07) 4952 3888

NEW TAILINGS FACILITY FOR RESURRECTED THUNDERBOX MINE

Rapid Dams, a new division of Rapid Crushing & Screening Contractors has been chosen to build a new tailings facility for the Saracen Mineral's Thunderbox Mine.

The Thunderbox open pit mine, located 45km south of Leinster is being re-opened by Saracen after having been on care and maintenance since 2007.

The site has an annual capacity of 2.5Mtpa.

The project is a significant one for Saracen as the development of Thunderbox will see the company achieve the status of a mid-tier gold producer with production reaching approximately 300,000 ounces per annum by 2017.

The new facility will have a capacity of 125,000 cubic metres and will be finished by Christmas.

The Rapid Dams division of Rapid Crushing & Screening has a highly capable team with a wealth of experience in wet and dry lift TSF construction.

Rapid Dams also handles Clay and HDPE and PVC lined ponds, dam extensions, the raising of embankments and the construction and maintenance of site roads and drainage.



DIGGERS AND DEALERS

A GREAT EVENT

Rapid Crushing participated in the Diggers and Dealers event in Kalgoorlie this year and we have to say, it was great to see a renewed level of optimism there.

There's a definite level of renewed, quiet optimism that has arisen in the gold mining sector.

It seems highly likely that sites with proven resources that have been on hold will be back in operation soon.

This year's event was the first that we have had the inclusion of our new division, Rapid Dams.

We were pleased with the interest it attracted.

We've now been part of the Diggers and Dealers event for more than 10 years.

It's always great to catch up with people who we haven't seen for a while.



We decided to do things a little differently at this year's Diggers and Dealers. Our stand featured a diorama displaying two piles of crushed ore – one being larger than the other, with the note 'Which would you prefer if they cost you the same?' It's the message that we want our prospective customers to understand – that we can deliver more for the same final price.





WHEN DOES A MORE EXPENSIVE QUOTE BECOME CHEAPER IN THE LONG RUN?

Over the 37 years that Rapid Crushing has been in operation we've seen innumerable crushing and screening services come and go.

Do you know why?

The reason is that they buy a plant, quote a low price for a project to ensure they win the job and a couple of years down the track when the machinery has become somewhat tired, they run into serious trouble.

1. They have to wait for parts which invariably means falling production output and a disgruntled client
2. They have to replace the machinery and find themselves with inadequate capital to do this

We have to tell you, that often when you compare a quote from Rapid Crushing against these types of operations, there is an initial impression that we are more expensive.

However, in the long run it's not the case, as we have proven many times during the course of 37 years of operation.

On many occasions we have found that companies when receiving tenders fail to factor in their full costs when they supply contractors with: fuel, accommodation, flights etc.

Rapid Crushing has proven time and again that what we're able to do with one plant operating a day shift often requires two shifts for other operations.

That means Rapid Crushing has fewer personnel on site which means less accommodation and flight costs, not to mention lower fuel costs for the operation.

In addition to that, you also need to consider what is likely to happen in the event of a machinery breakdown.

With many contractors they have to wait for a part to be delivered by a third party and in some cases wait for a service person to be despatched to sort the problem, whereas with Rapid Crushing because we build our own plant:

1. we always have a substantial supply of spare parts on site
2. if a part was ever needed that was not on site, we would endeavour to have it on hand in our workshop to be hot shot to the site.

This level of backup leaves you far less vulnerable to delivery schedules failing to be met.

**WE'VE
PROVEN THAT
THE RIGHT
GEAR MAKES A
DIFFERENCE!**

Just last year we proved to a major mining company how much more efficient we can be.

The client had a pressing need to produce a major amount of tonnage in a short period of time and had several contractors working the site.

When they realised the required production deadline was unlikely to be met, they called us in.

Our machinery, completely out-produced all other contractors on site with the final result being that the target was achieved.



In action at Barrow Island

BIG PROJECT AT BARROW ISLAND STILL GOING STRONG

A major project of producing 7 million tonnes of construction material at Barrow Island is in its fifth year.

Rapid Crushing has been working at the Gorgon site, solidly for over five years crushing construction material for the Chevron LNG plant.

We are proud to have been a part of such a significant project.

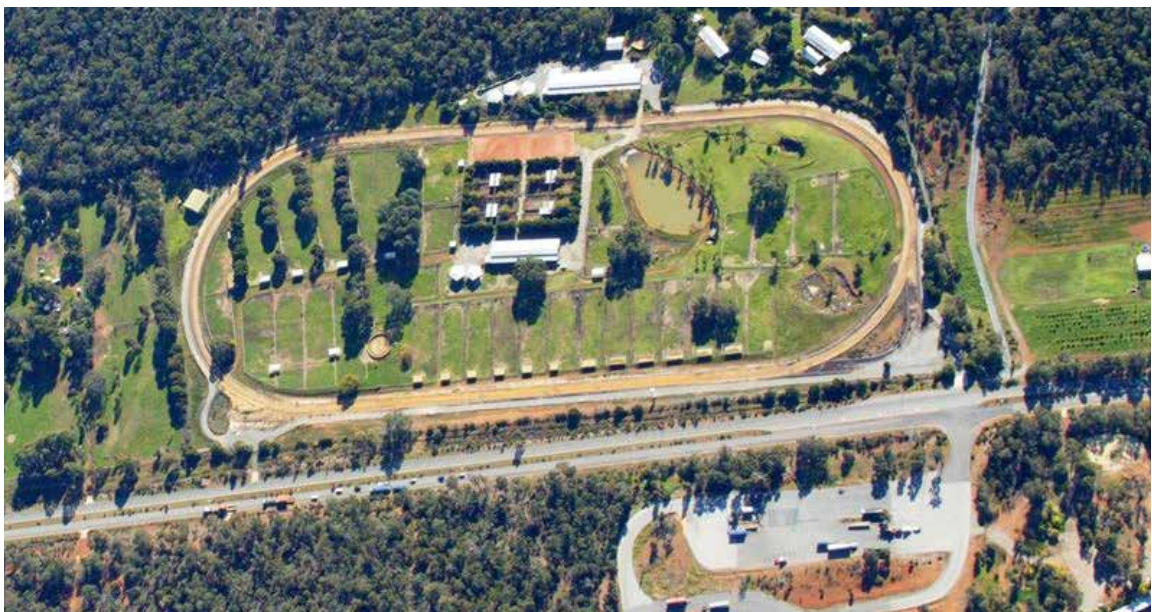
PASSION FOR HORSES LEADS TO BALMORAL PARK

Rapid Crushing's founder, Neil Irvine is well known in horse racing circles for his love of race horses -their breeding and their training.

So it has come as no surprise that he has bought Balmoral Park, the training facility formerly owned by the late, Laurie Connell.

The property located in Bedforddale, about 10kms south of Armadale on the Albany Highway has had several owners and was renamed Balmoral Park.

Neil plans to rejuvenate the property and make it a centre for horse breeding and training, due to its state-of-the-art facilities and proximity to Perth.



"Doing it Right"

www.rapidcrushing.com.au

Media Support Services 1300 557 660

PO Box 39, Maddington WA 6989
577 Bickley Road, Maddington WA 6109
Ph: (08) 9452 5888 Fax: (08) 9452 5822
email: reception@rapidcrushing.com.au

